

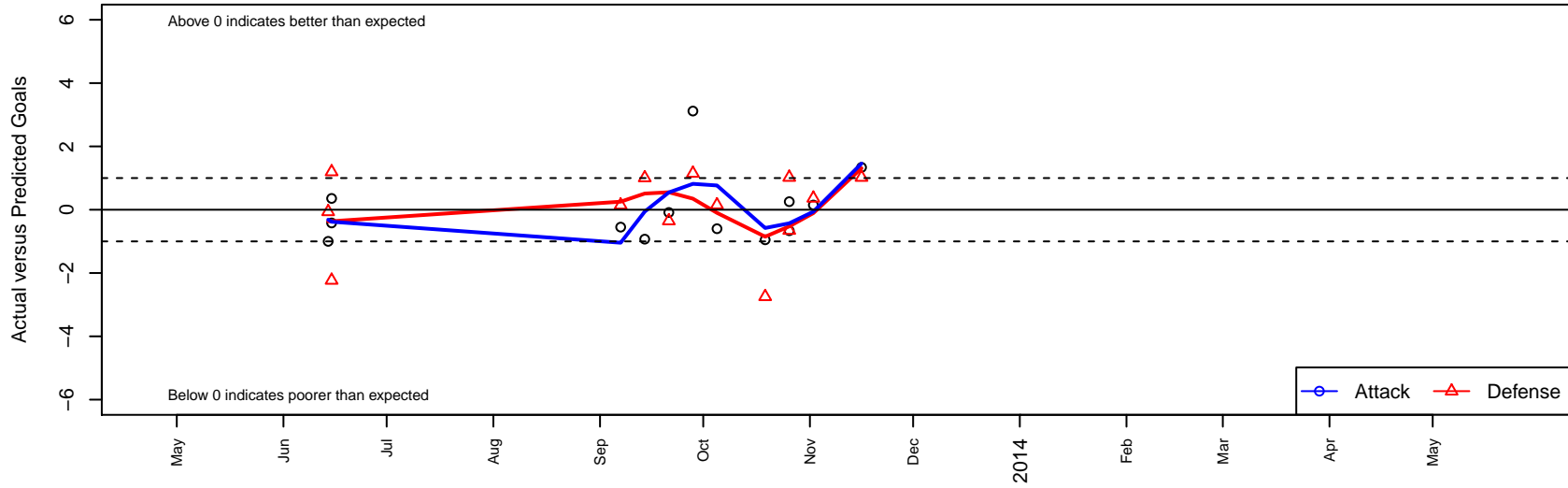
Sabers Delpizzo G01

Sabers
 Spokane, WA
 G01 total strength=394
 attack=0.36 defense=0.17
 fall league = PSPL-Inland Div 2 U12
 alt names used:

Venues played:
 Olivia Chaffin GU12 B
 PSPL-Inland Div 2 U12



Sabers Delpizzo G01
 Dots are actual minus expected GF (blue circles) and GA (red triangles).
 Blue line is smoothed change in attack strength. Red is smoothed change in defense strength.



	date	home		away		venue	pred.home	pred.away
6596	2013-11-16	Sabers Delpizzo G01	4	Breakers Bishoff G01	0	PSPL-Inland Div 2 U12	2.66	1.02
6365	2013-11-02	Sabers Delpizzo G01	6	Valley Thunder SC G02	0	PSPL-Inland Div 2 U12	5.85	0.36
6220	2013-10-26	FC Spokane Grey G01	2	Sabers Delpizzo G01	3	PSPL-Inland Div 2 U12	1.35	2.75
6222	2013-10-26	Sabers Delpizzo G01	2	Breakers Bishoff G01	0	PSPL-Inland Div 2 U12	2.66	1.02
6054	2013-10-19	CDA Sting Rapids G01	5	Sabers Delpizzo G01	1	PSPL-Inland Div 2 U12	2.25	1.95
5713	2013-10-05	Sabers Delpizzo G01	0	Sandpoint Strikers G01	4	PSPL-Inland Div 2 U12	0.60	4.15
5545	2013-09-28	Sabers Delpizzo G01	6	The Academy Cads G02	0	PSPL-Inland Div 2 U12	2.88	1.15
5405	2013-09-21	Cheney Storm FC G01	2	Sabers Delpizzo G01	1	PSPL-Inland Div 2 U12	1.65	1.09
5234	2013-09-14	ASE McDonald G01	0	Sabers Delpizzo G01	1	PSPL-Inland Div 2 U12	1.01	1.93
5096	2013-09-07	Cobra Othello Chaos G01	1	Sabers Delpizzo G01	2	PSPL-Inland Div 2 U12	1.14	2.55
3901	2013-06-15	Sabers Delpizzo G01	1	Spokane Foxes Emerald G01	3	Olivia Chaffin GU12 B	0.64	4.20
3903	2013-06-15	XiFA G2020 G01	13	Sabers Delpizzo G01	0	Olivia Chaffin GU12 B	10.77	0.42
3883	2013-06-14	FC Spokane Black G01	2	Sabers Delpizzo G01	0	Olivia Chaffin GU12 B	1.94	1.00